

CROWN Fountain Nozzle

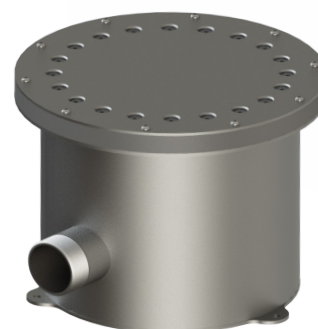
Crown Your Events with Water!



The crown effect is brought to life by **CROWN Fountain Nozzle**, featuring 20 water outlets. The system's water inlet is 1 ½ inches, and its specially designed outlet creates an illusion of a crown during the show. This innovative design ensures that the water jets form a beautiful, crown-like shape, captivating the audience with its elegance and grace. Additionally, various numbers of LIGHTs can be assembled to make the show even more captivating at night. These lights can be customized in different colors and patterns, creating a mesmerizing visual experience that enhances the overall spectacle. **CROWN Fountain Nozzle** is perfect for special events, public squares, and performance venues, providing both functionality and aesthetic appeal.



- ✓ LIGHT (Optional)
- ✓ Robus Stainless Steel Body
- ✓ Water inlet 2" NPT Female
- ✓ The Diameter of water column 133mm



CROWN Fountain Nozzle



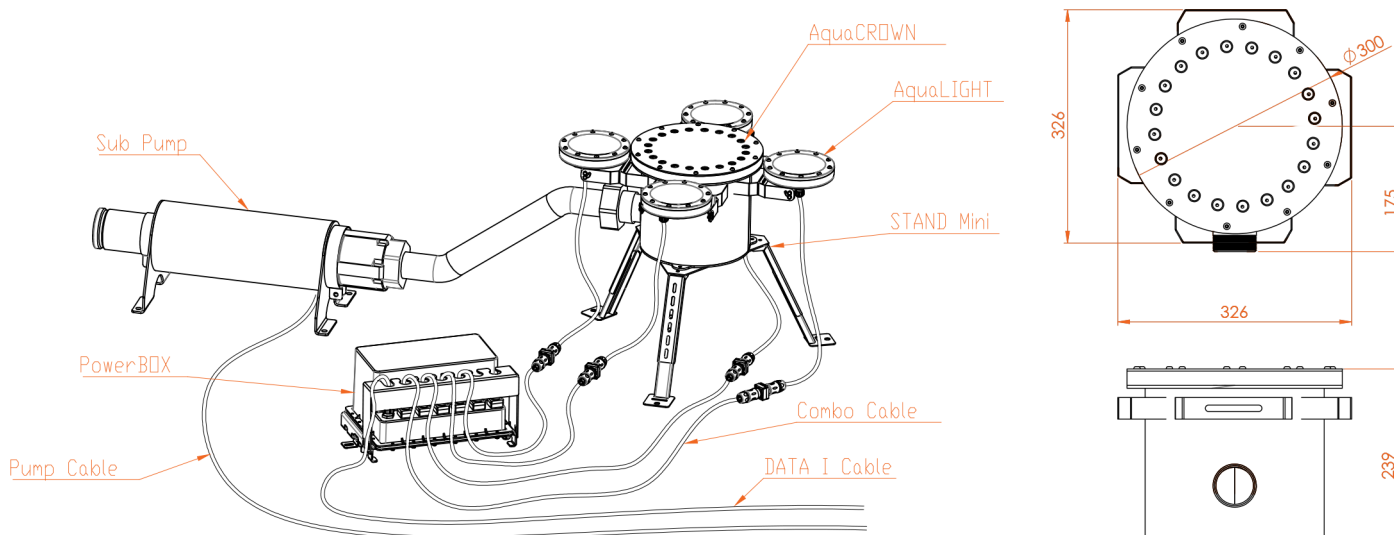
TECHNICAL DETAILS

MODEL :	CROWN Fountain Nozzle
DIMENSION(ØxH) :	300x239 mm
MATERIAL :	Stainless Steel
MAX. HEIGHT :	3 m
MAX PRESSURE :	2 bar
WEIGHT :	15 kg
PRODUCT NO :	1220

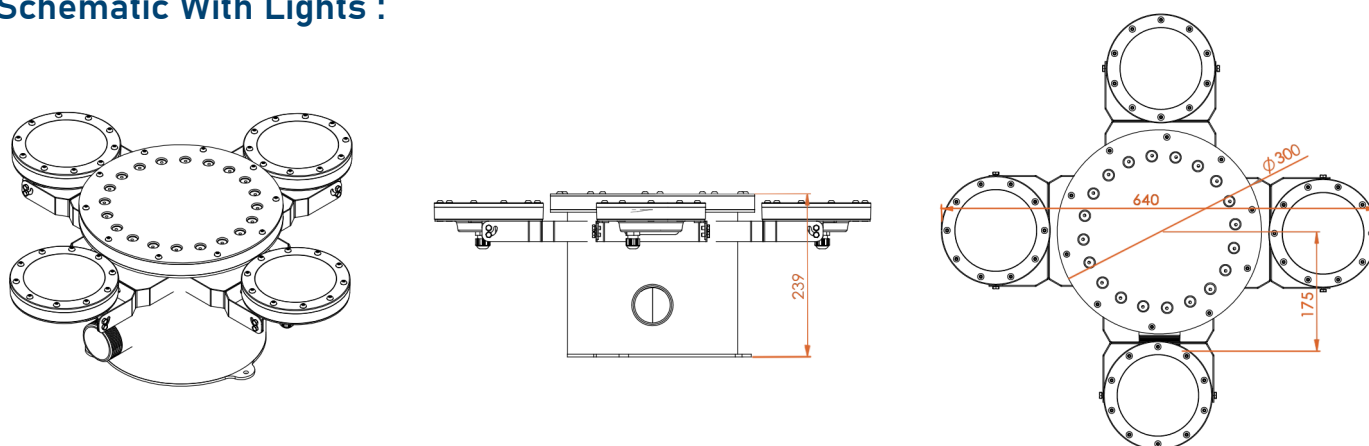
HEIGHT (m)

HEIGHT (m)	I/MIN	BAR
1.00 :	115	0.10
1.50 :	137	0.15
2.00 :	160	0.21
2.50 :	182	0.27
3.00 :	200	0.33

Schematic and Connection Schematic :



Schematic With Lights :



COMPATIBLE ELEMENTS AND ACCESSORIES

PRODUCT GROUP	SEE
Nozzles :	Accessory nozzles
Connection :	Connection accessories
Controlling :	Control accessories
Holder and Stand :	Holder and Stand Accs.
Lighting :	Lighting Series