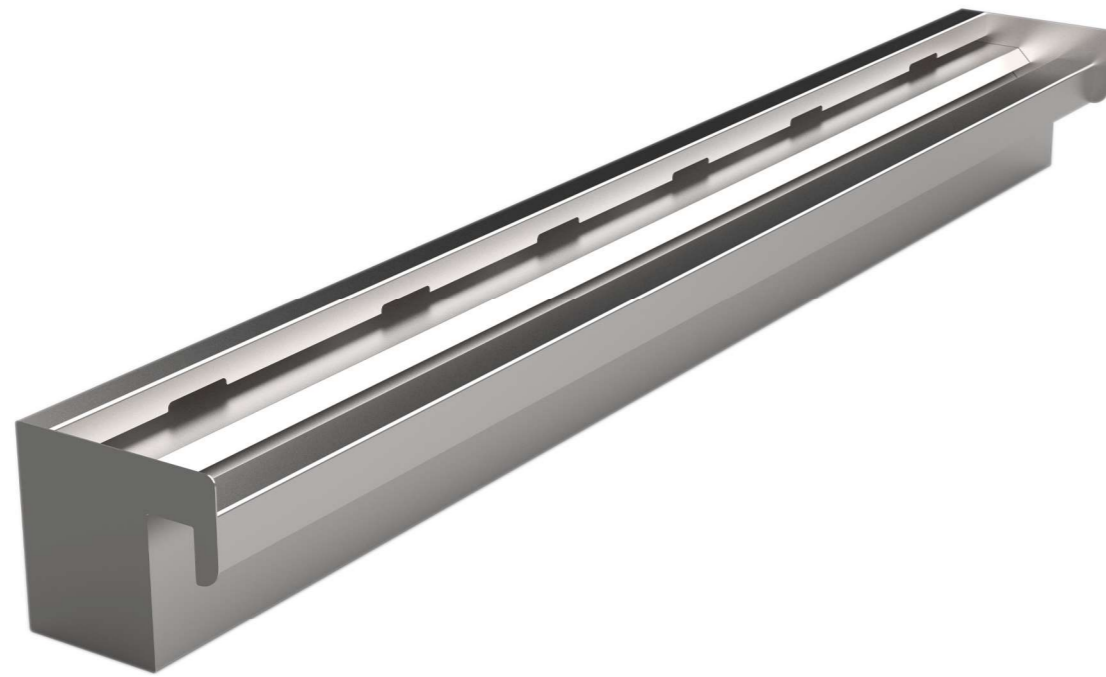
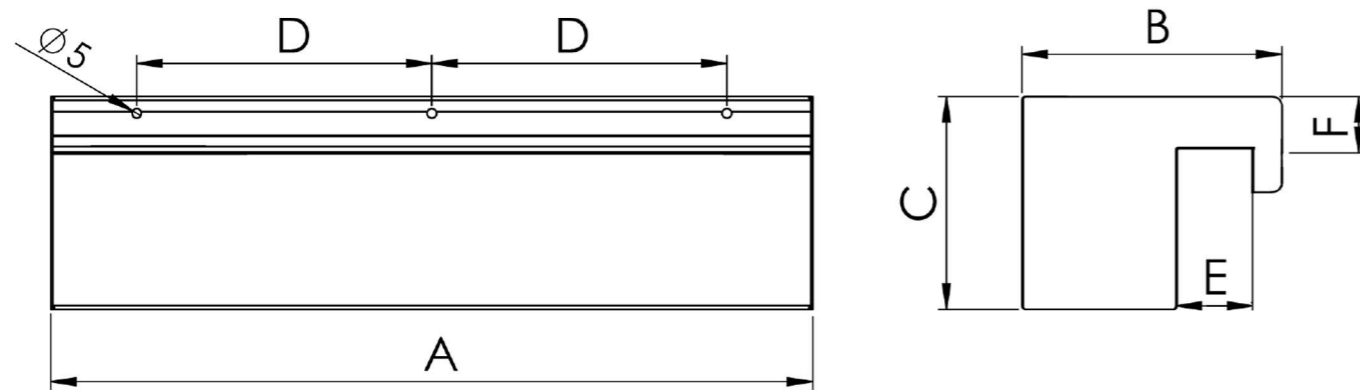


# Wall Waterfall Fountain Nozzle



- ⊕ Designed to flow water over various surface types such as glass, stone, and more
- ⊕ Easy built-in (recessed) installation
- ⊕ Equipped with internal flow stabilizer and vibration dampener
- ⊕ Constructed from 304 and 316 stainless steel
- ⊕ Supports both wet wall and Arya Wall water feature styles
- ⊕ Available in various sizes



Dimensions	Water Fall 30 cm	Water Fall 40 cm	Water Fall 60 cm	Water Fall 80 cm	Water Fall 100 cm	Water Fall 120 cm	Water Fall 150 cm	Water Fall 200 cm
A (mm)	300	400	600	800	1000	1200	1500	2000
B (mm)	135	135	135	135	135	135	135	135
C (mm)	115	115	115	115	115	115	115	115
D (mm)	100	150	250	350	450	550	690	950
E (mm)	30	30	30	30	30	30	30	30
F (mm)	35	35	35	35	35	35	35	35
Connection	G1x2	G1x2	G1x2	G1x2	G1x2	G1x4	G1x6	G1x6
Weight (kg)	2	2.5	3.5	4.5	5.7	6.2	8.5	11